

Trail Etiquette

- Please be courteous to others.
- **In Winter Please:**
 - Ski in the indicated direction.
 - Respect the ski-only trail designation. Please no feet, paws, wheels or hoofs.
 - No skate skiing on classic-only trails.
 - For your safety, please respect race course closures.
 - Respect dog mushing trails. They are for (you guessed it) dog mushing only.
 - Respect the rights of all users on multi-use trails.
- **In Summer:**
 - Trails are for all non-motorized uses.
 - Trails are open to two-way traffic.

Acknowledgements

Funds for this map project were donated by the Anchorage Parks Foundation challenge grant program. Gordon Wetzel was the project manager for this map edition. Douglas Tosa of the Alaska Center for the Environment Conservation GIS Center created the map and layout. Many volunteers contributed to this edition, including Charlie Barnwell, Jim Burkholder, Bruce Talbot, Fran Pekar, Janice Tower, Diane Moxness, Gavin Vaughn, Marc Phillips and many others.

They're Our Trails Lets Make Them Great!

Join NSAA and support our trails!
The Nordic Skiing Association of Anchorage (NSAA) is an alliance of local trail users dedicated to world-class trails with free access for all. NSAA grooms and maintains 140 km (90 miles) of trails at Kincaid Park, Far North Bicentennial Park, Bartlett High School, APU, and Chugiak/Beach Lake. It is YOUR donation and effort that makes these trails a reality. We need the support of all users to make our trails great. Contact NSAA for more information on membership, trail pins, and other NSAA programs and events.

www.AnchorageNordicSki.com

Phone: 907-276-7609
Email: nsaa@alaska.net
Hot Line: 248-6667 (trail conditions and event information)

Data Sources: Municipality of Anchorage GIS. Color aerial imagery acquired July 12, 2006 at a 1.5 foot pixel resolution. Black and white aerial imagery was acquired July 01, 2008 and May 27, 2008 at a 1 foot pixel resolution. GIS data includes the MOA GIS trail geodatabase, roads, stream layers. Trails mapping was acquired using mapping grade GPS instruments in combination with digitizing off of the aerial imagery. NAD83 datum, Alaska State Plane Zone 4.



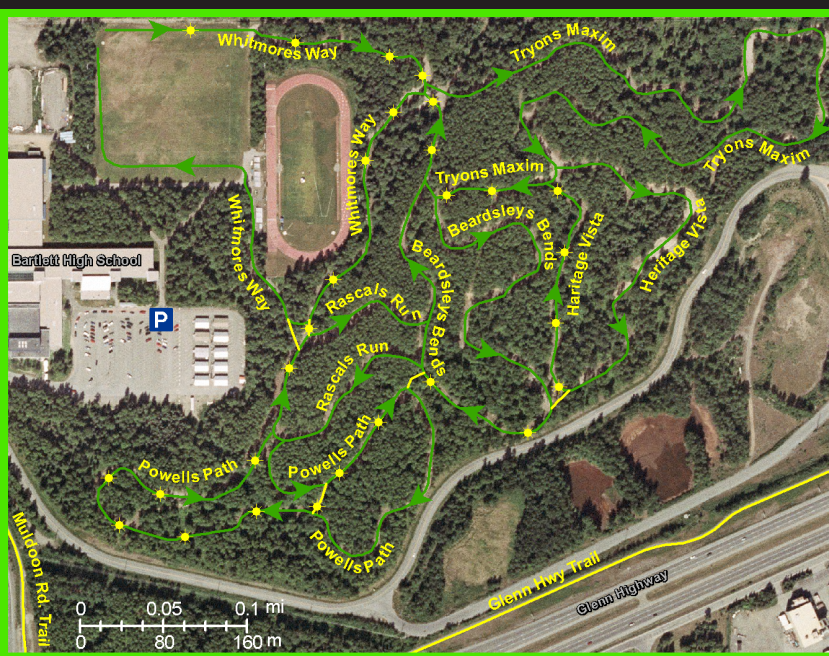
NSAA Trail Map

Nordic Skiing Association of Anchorage

They're our trails,
let's make them great.



Kincaid ~ Far North Bicentennial ~ APU ~ Russian Jack Springs ~ Bartlett ~ Edmonds Lake ~ Beach Lake

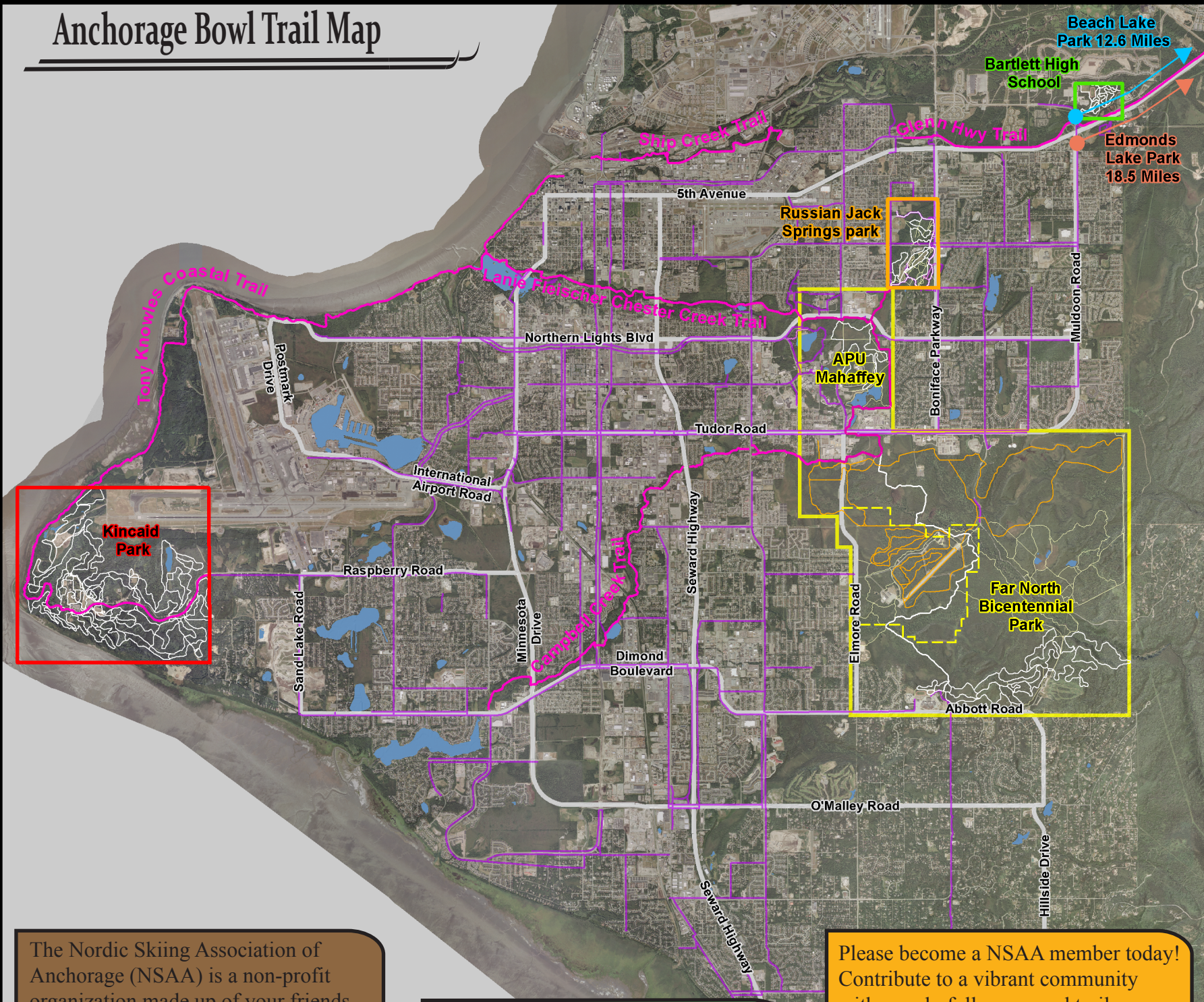


Bartlett High School

Like many of the Anchorage trails, the Bartlett trail system was built by a dedicated group of NSAA volunteers including coaches, parents, student athletes and friends. During the summer and fall of 1974 Tom Besh, Lin Hinderman and Sally Burkholder laid out a 2 km trail on military land adjacent to the school grounds. Lights were installed in 1978. In 2005 the trail system was redesigned and reconstructed to accommodate a security fence along the military property line.

Trail	Distance
Total Trails	5.0 km (3.1 mi)
Beardsley's Bends	0.75 km (0.5 mi)
Heritage Vista	0.6 km (0.4 mi)
Powell's Path	1.0 km (0.6 mi)
Rascal's Run	0.4 km (0.2 mi)
Tryon's Maxim	1.3 km (0.8 mi)
Whitmore's Way	1.0 km (0.6 mi)

Anchorage Bowl Trail Map



Kincaid Park

The trail system at Kincaid was started by members of the Nordic Skiing Association of Anchorage (NSAA) to provide more training and racing venues for the high school ski teams. The Dimond High School ski team first used trails near Little Campbell Lake in 1971-72. The first 7.5 km of trails near the lake were designed and constructed by NSAA volunteers Dick Mize, Jim Burkholder and Jon Elliott in 1972. An additional 12 km of trails were constructed on the south side of Raspberry road in 1974.

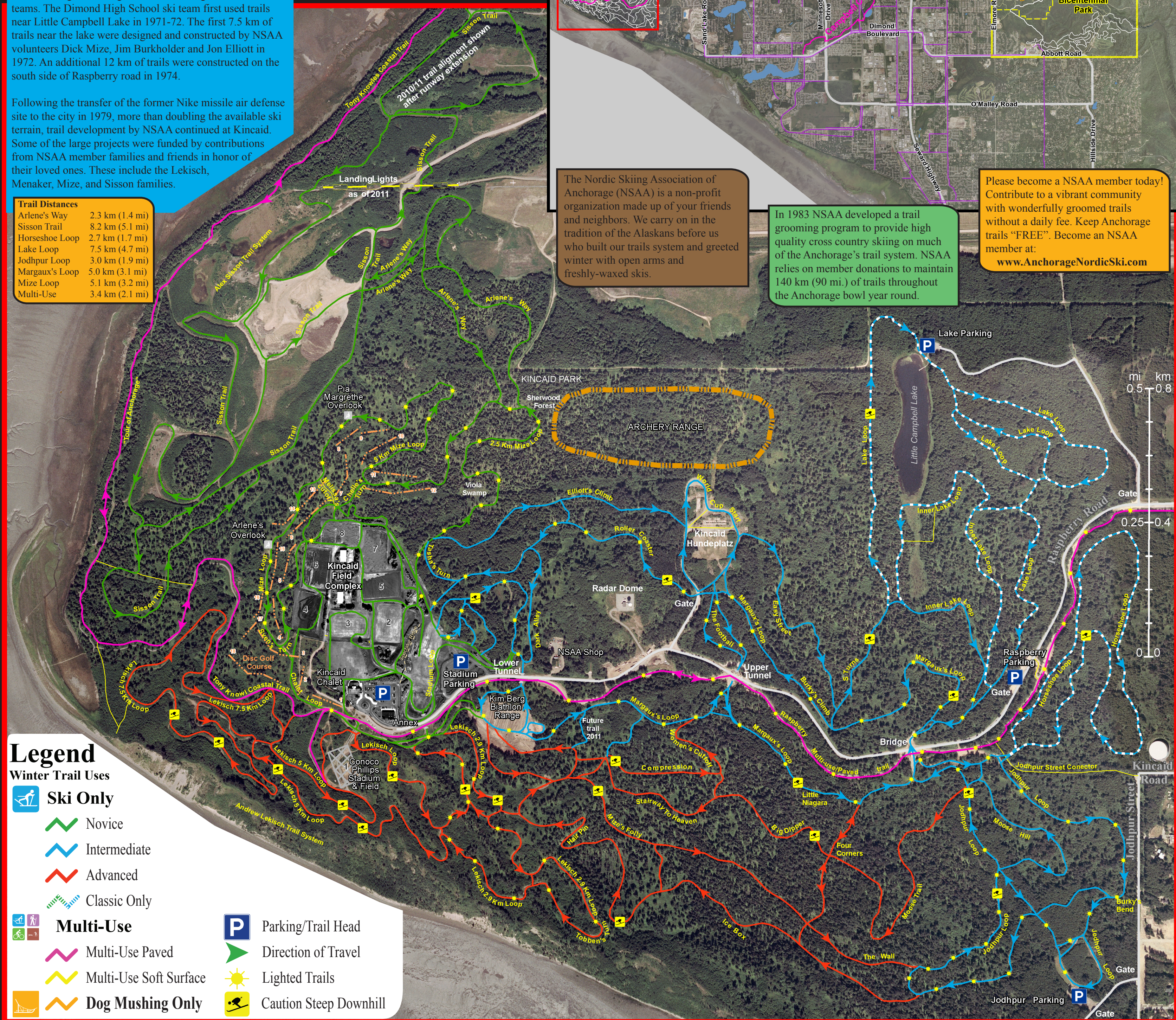
Following the transfer of the former Nike missile air defense site to the city in 1979, more than doubling the available ski terrain, trail development by NSAA continued at Kincaid. Some of the large projects were funded by contributions from NSAA member families and friends in honor of their loved ones. These include the Lekisch, Menaker, Mize, and Sisson families.

Trail	Distance
Arlene's Way	2.3 km (1.4 mi)
Sisson Trail	8.2 km (5.1 mi)
Horseshoe Loop	2.7 km (1.7 mi)
Lake Loop	7.5 km (4.7 mi)
Jodhpur Loop	3.0 km (1.9 mi)
Margaux's Loop	5.0 km (3.1 mi)
Mize Loop	5.1 km (3.2 mi)
Multi-Use	3.4 km (2.1 mi)

The Nordic Skiing Association of Anchorage (NSAA) is a non-profit organization made up of your friends and neighbors. We carry on in the tradition of the Alaskans before us who built our trails system and greeted winter with open arms and freshly-waxed skis.

In 1983 NSAA developed a trail grooming program to provide high quality cross country skiing on much of the Anchorage's trail system. NSAA relies on member donations to maintain 140 km (90 mi.) of trails throughout the Anchorage bowl year round.

Please become a NSAA member today! Contribute to a vibrant community with wonderfully groomed trails without a daily fee. Keep Anchorage trails "FREE". Become an NSAA member at:
www.AnchorageNordicSki.com



Legend

Winter Trail Uses

- Ski Only**
 - Novice
 - Intermediate
 - Advanced
 - Classic Only
- Multi-Use**
 - Multi-Use Paved
 - Multi-Use Soft Surface
 - Dog Mushing Only
- P** Parking/Trail Head
- Direction of Travel
- Lighted Trails
- Caution Steep Downhill